



ROSEBANK SCHOOL

Dream. Believe. Succeed - Kia wawata. Kia whakapono. Kia tutuki

Newsletter 16 Term 4, Week 5 2022

Principal's Message

Kia ora Rosebank Community,

The countdown to the end of year is really on and it's hard to believe we have only 4 weeks left in the 2022 school year.

Teachers are very busy at the moment writing reports, preparing their cultural items for the upcoming cultural festival, planning end of year activities etc - whilst also having an eye on 2023 and what lies ahead. On top of all of their school activities - teachers also have their own families to help look after, houses to run and all of the usual day to day things that go on, so it was wonderful to see 2 weeks ago, the amount of emails we received for 'Teachers Day' - all staff received numerous emails/letters thanking them for all they do - these were much appreciated and really gave the staff a huge lift as we shift towards the end of the school year!

You may have noticed the huge amount of building work going on within the school at the moment - the Te Whānau o Pātiki block will all soon be fully completed and children can move in, whilst the Senior playground is just about all done and the canopy over the turf is well underway. All of these upgrades will continue to improve the physical environment of the school.

In further exciting news - In 2023, Rooms 6 and 7 (which run alongside the library) will become 2 satellite classes for Oaklynn Special School - further adding to Rosebank School and what we provide. Further updates around Oaklynn's arrival will come soon!

Keep safe and look after each other!

Paul Pirihi

Principal

Important Dates this term

- Friday 18th November - Teacher Only Day, no school
- Saturday 26th November - Rocket Park Eden Albert Cultural Festival (TWOP Performing)
- Friday 2nd December - Rosebank Cultural Festival 1pm-4pm

Arrival at School

Large numbers of children are arriving at school very early in the morning. Our gates open at 8:20 and children are asked to stay off site until this time. Teachers are engaged in preparing for their day and therefore are not free to supervise the children. It is a health and safety issue for children to be arriving before 8:20. Please ensure your children are arriving at school after this time.

Picking Up Early

Please remember if you are picking up your child(ren) early you must come to the office and sign them out. You cannot go straight to the class to get them

Uniform/Hats

Terms 1 and 3 are 'Hat terms'. Children need to be wearing hats anytime they are outside in the playground. Any completely black bucket hat or cap is acceptable. These are available at a low cost at Postie Plus, The Warehouse etc.

Whau Football Tournament

A great day out for some of our Year 5/6 students at the Whau Cluster football tournament, held at Crum Park in Titirangi. Our students showed respect, kindness and tried their best in every game. Each player at the tournament received a free football from the Tanya Dalton Foundation. How awesome!



Justice of the Peace

One of our Rosebank School staff, Gordon Gibbons is a fully certified Justice of the Peace so if you require the services of a JP, please contact Gordon Gibbons directly, 021912927, and make an appointment during school hours.

Athletics

The Whau Cluster Athletics Day was held on Tuesday 16 November at Eastdale Reserve.

Rosebank School had 40 athletes participating in both track and field events. Rosebank School showed team spirit, determination and fantastic sportsmanship.

The 10/11 year old boys and Under 10 boys won the finals in their relay races with our 10/11 year old girls coming in fourth place and our Under 10 girls coming in third place.

There were many outstanding individual performances. A huge congratulations to those students who placed first, second or third in their respective events.

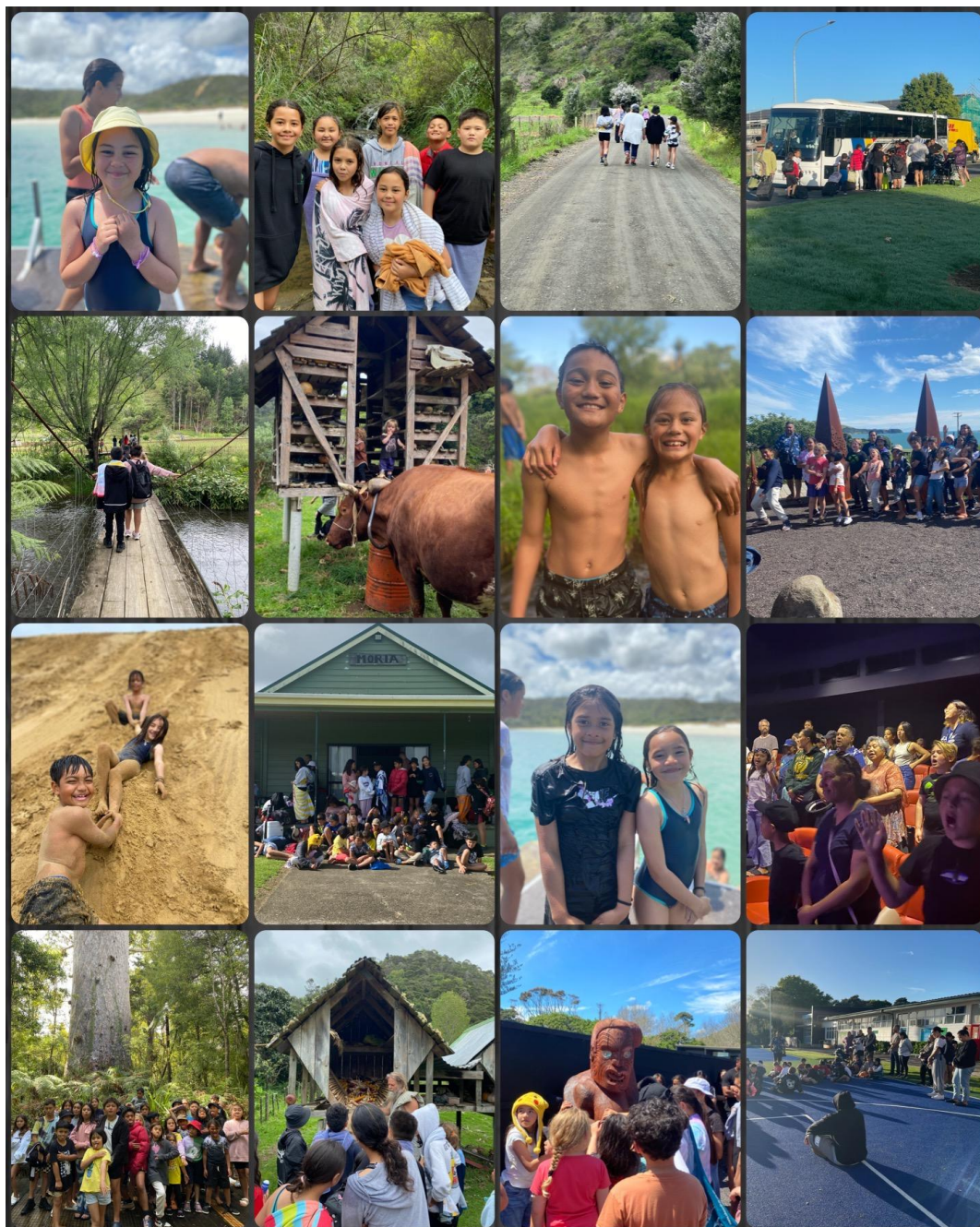
A big thank you to Miss Crooks and Matua Solomon. They worked tirelessly throughout the day. Thank you to the parents, teachers and students who came to support our school as well. It was very much appreciated.

A **HUGE MIHI** also to Whaea Rebecca for her organisation and running of the event!



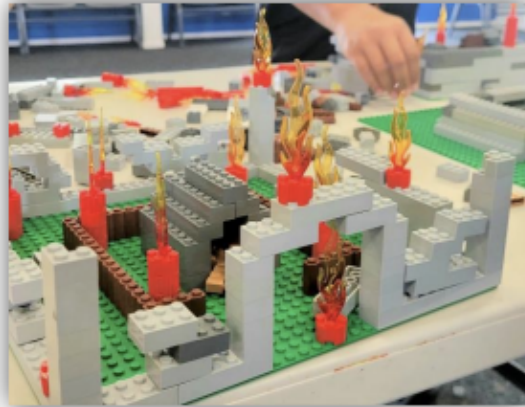
Noho Marae

Te Whānau o Pātiki (Rosebank's Māori Bi-lingual Unit) had an amazing haerenga to the north earlier this month. We were welcomed by the haukainga at Moria Marae, in Whirinaki. This marae is home to longstanding staff member Aggie Hyland. The tamariki were able to experience the newly established Education Centre 'Manea, Kupe's Footsteps' which supported their learning about Kupe's arrival to Aotearoa. The tamariki showed us their bravery and skill to conquer the sand dunes sliding down the massive dunes and into the water. A hikoi up into the land behind the marae uncovered historical spots and stories from the area. We met a whānau living there completely sustainably in harmony with the whenua, they were kind enough to show us their gardens and share with us their practices. We learned a lot and discovered that it is possible to live without technology! The food at the marae was tino reka, we enjoyed the delicacies of the north- kutai, kina, paua, ika mata and tio! On our journey home we stopped at Kai Iwi lakes, the freezing water did not prevent the tamariki (and kaiako!) from jumping off the pontoon and swimming in the crystal clear lake. A big mihi to our whānau who helped fundraise to get us there and to the mātua who joined us on our journey. We definitely achieved the goal of learning more about our land and our people and making memories together! Mīharo rawa atu!



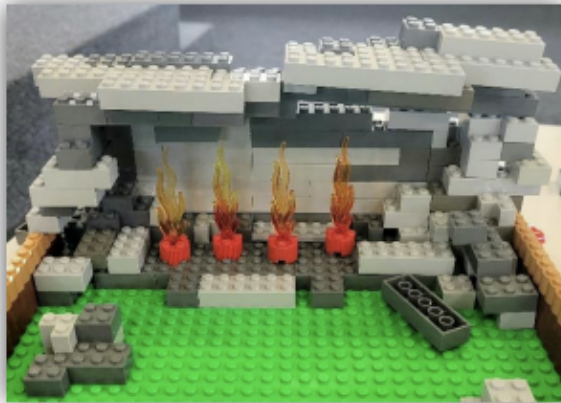


Lego Building @ Rosebank School 2022

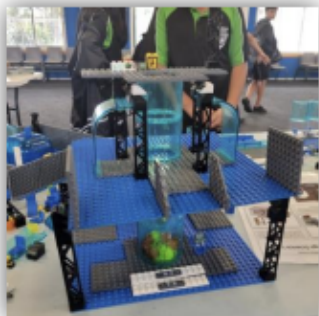




Lego Building @ Rosebank School 2022



Thank you to the
Lego Master
Builders at
Rosebank School.





ROSEBANK SCHOOL PRESENTS

Cultural Fest **2022**

**In Celebration of the World's Diverse
and Unique Cultures**

1pm - 4pm

Friday 2nd December, 2022

Rosebank School

Entry: Gold coin koha per family